

The background is a vibrant purple with scattered yellow, green, and blue confetti and feathers. A colorful Mardi Gras mask is in the top left, and a large feather is in the top center. A yellow and blue mask is in the bottom right.

TUESDAY, FEBRUARY 21, MARDI GRAS FAT TUESDAY

MARDI GRAS SCAVENGER HUNT

TODAY IS THE DAY OF THE SCAVENGER HUNT, AND I'M
SURE ALL OF US ARE EAGER TO START.

**PARTICIPANTS HAVE UNTIL 3:30 P.M. TUESDAY TO
SUBMIT THEIR SCAVENGER HUNT ANSWERS.**

FILL OUT AN ANSWER SHEET AND DROP IT OFF IN THE
FAT TUESDAY BOX OUTSIDE THE LIBRARY.

3:30-4:00PM:
HORDERVES, DRINKS, AND MUSIC

4:00 P.M.
THE SCAVENGER HUNT WINNERS WILL BE
ANNOUNCED

AFTER SUBMISSIONS ARE CLOSED, ALL THE
ANSWERS WILL BE REVIEWED AND
THE WINNERS OF
1ST, 2ND, AND 3RD PLACE
WILL BE DETERMINED

**IN CASE OF A TIE: TIEBREAKER
ANSWER MARDI GRAS TRIVIA)**

A mix of Pictures and items will be placed all throughout the facility. Keep your eyes peeled throughout the next couple of days!

MARDI GRAS SCAVENGER HUNT

Resident's Name: _____

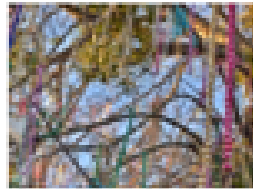
Staff Name(s): _____

LOCATION FOUND KEY: C- COMMONS; L- LIBRARY; LC- LOBBY/CONCIERGE AREA; B -BISTRO; G -GYM 4THFL; D -DINING ROOM



Bourbon Street

LOCATION FOUND:



Beaded Tree

LOCATION FOUND:



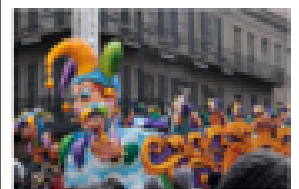
Jester

LOCATION FOUND:



Fleur de Lis

LOCATION FOUND:



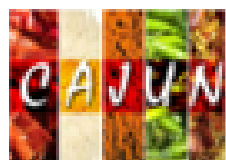
Mardi Gras Parade

LOCATION FOUND:



King Cake

LOCATION FOUND:



Cajun Seasoning

LOCATION FOUND:



New Orleans

LOCATION FOUND:



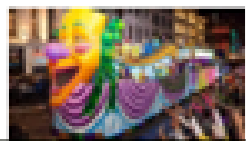
Krewe of Bacchus

LOCATION FOUND:



Person w/ beads

LOCATION FOUND:



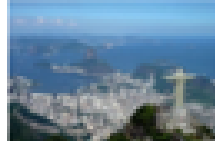
Parade Float

LOCATION FOUND:



French Quarter

LOCATION FOUND:



Brazil

LOCATION FOUND:



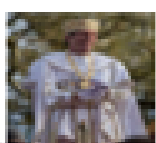
Mask

LOCATION FOUND:



St. Augustine Marching Band

LOCATION FOUND:



King of Bacchus

LOCATION FOUND:



Confetti

LOCATION FOUND:



Flambeaux's

LOCATION FOUND:



Doubloons

LOCATION FOUND:



King of Rex

FOUND: LOCATION
